

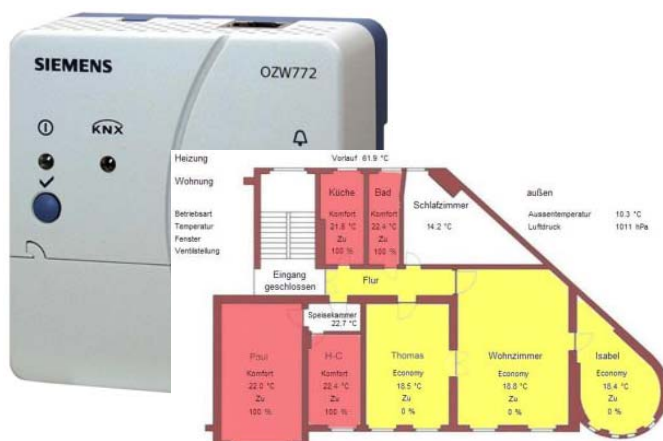
facts

Product Release Synco™ 700

OZW772... Web Server V2.0

The new Web server OZW772... are available

- Web server for 1, 4, 16 or 64 Synco KNX-Devices
- User defined plant diagrams



No. 36E139BCen

March 2010

36 – HVAC Standard Controls
Product release

Products

OZW772.01
OZW772.04
OZW772.16
OZW772.64

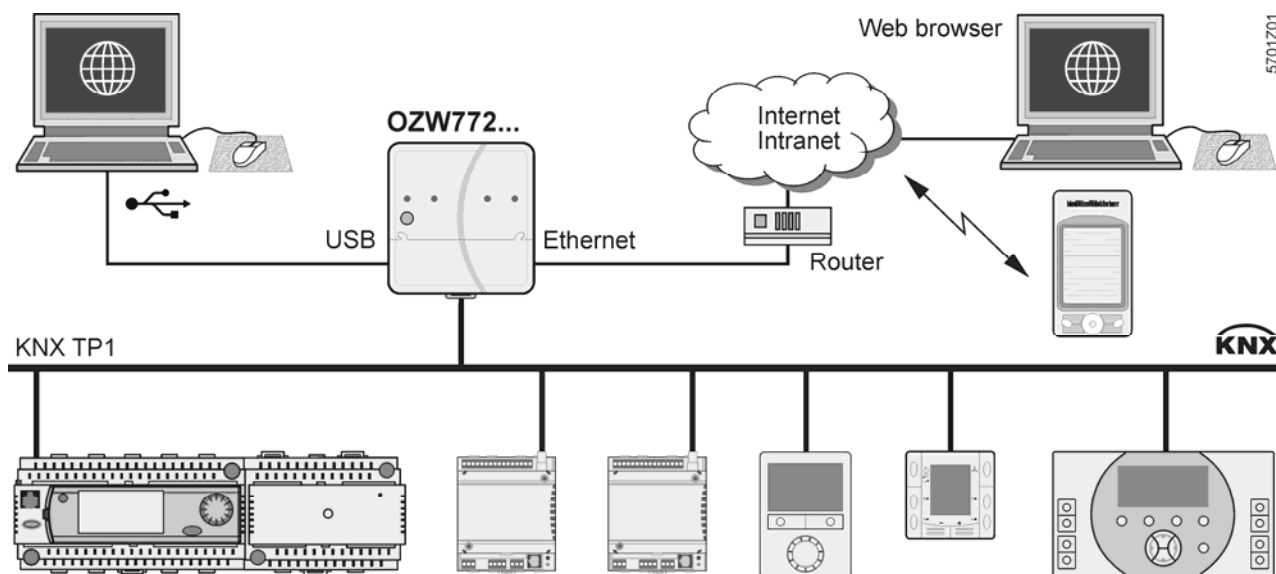
Contents

1	Summary	3
	Background Information.....	3
	Web server visualizes Synco HVAC plants	3
	Benefits	4
	Supported Web-Browser	4
	Further PC Web-Browser.....	4
	Smartphone or PDA Web-Browser	5
	Ordering, sales and prices	5
	Import of Plant Diagrams.....	5
	Plant Diagram exported by the HIT Tool	5
	Plant Diagrams exported by another OZW's	5
	Plant Diagrams exported by the ACS	5
2	System overview and product description	6
	Operation	6
	Monitoring, Alarming	6
	Valid Version Set	7
	Commissioning and Remote Service with ACS Software.....	7
	KNX Device list	7
	Displaying of user-defined Text in the ACS Software	8
	Offline Trend with ACS.....	9
	Limitation of the Web Server Operation	9
3	Product documentation	10
4	Contact	11

Background Information

Last summer OZW772.01 V1.0 was introduced. This will now be replaced by V2.0. The hardware and the price of the OZW772.01 remain unchanged. The new firmware supports the following new features:

- Supports all Synco KNX devices
- User defined Plant diagram
- User defined E-mail signature
- Link to the device with a fault message
- Commissioning and remote service with ACS700
- Additional types – web server for 1, 4, 16 or 64 Synco KNX devices



Web server visualizes Synco HVAC plants

The integrated OZW772... webserver facilitates operation and monitoring of Synco HVAC plant from any location. The new V2 firmware enables the webserver to show the entire installation in the form of plant diagrams, offering the user a quicker and more straightforward overview.

The new firmware integrates plant diagrams that visualize the entire HVAC installation, including datapoints. These graphic presentations allow the user to obtain a better overview of plant. Room operating states and conditions are presented from the user's perspective so to say. This means that – in the event of fault – the user is able to access the respective plant sections more straightforwardly. Also, additional information such as links to plant, function and service descriptions or data sheets can be integrated into the plant diagram. Another possibility is the inclusion of external links, allowing the user to click through several interlinked plants, for example. If required, even pictures obtained from a webcam can be integrated.

Benefits

The OZW772... Web server is the ideal complement to your Synco™ system and helps ensure cost-optimum operation of your HVAC plant. It can be controlled and monitored from any PC or Smartphone having access to the Internet – any time, from any location. The integrated alarm system transmits service notes and messages about potential faults to E-mail recipients.

Feature	Function	Benefit
Straightforward commissioning	Commissioning optionally with the web browser or with the support of the tool ACS700	Time saving due to minimum commissioning effort
	The software configures itself by automatically identifying a maximum of 64 connected Synco devices and then provides the relevant datapoints	
	A library comprising more than 100 standard applications and the associated plant diagrams is provided	
User defined Plant diagram	If required, the standard plant diagrams can be matched to suit individual needs. Plant diagrams can also be completely customized	Easy Operation and Overview thanks to realistic plant diagrams
Messages at any time and from any location	Any fault status or maintenance messages from your HVAC plant are sent directly via E-mail	You can respond more quickly, you save time and unnecessary service visits
Energy-saving and efficient operation of plant	Operation and monitoring at any time from any location via web browser	cost and energy savings
Protection of investments thanks to expandable system	You can extend your HVAC plant at any Time. Additional Synco controllers will be linked to the same or to an additional web server OZW772...	Special customer needs can be satisfied quickly, at any time

Supported Web-Browser

We have intensive and successfully tested the following PC Web-Browser:

- Internet Explorer 7.0 and 8.0
- Mozilla Firefox 3.5

The Internet Explorer 6.0 works, but has some minor defects.

Further PC Web-Browser

Quick tests of the following Web-Browser have shown also very good results:

Chrome, Opera and Safari.

Smartphone or PDA Web-Browser

The Safari on the iPhone works perfect. For all other devices we recommend the following two web-browsers, even if they are not perfect. Downloads for several operating systems are available:

- Opera Mobile <http://www.opera.com/mobile/download/>
- Iris-Browser <http://www.freewarepocketpc.net/ppc-download-iris-browser.html>

The development of the Iris-Browser is stopped, nevertheless it is a good windows mobile browser.

Ordering, sales and prices

The new OZW772... will be open for ordering and available from DC Nuremberg from March 2010

When ordering, please specify the name and product number. Example:

- Web server OZW772.16

The following is included in the package:

- Installation instructions G5701xx (multilingual)
- Power cable, power supply AC 230 V
- Ethernet cable
- USB cable
- cable ties

The commissioning instructions C5701 (de / en) are saved to the web server at:

<http://<IP address>/doc/>

Name	Product number	Price list 2010 (€)
Web server for 1 KNX device	OZW772.01	305,32
Web server for 4 KNX devices	OZW772.04	610,64
Web server for 16 KNX devices	OZW772.16	915,96
Web server for 64 KNX devices	OZW772.64	1.221,28

Import of Plant Diagrams

For the import are three sources available.

Plant Diagram exported by the HIT Tool

Most of all HQ-Application have the web-plant diagram as part of the "Application related documents".

Plant Diagrams exported by another OZW's

Plant diagrams can be exported by another OZW772 or OZW775. This is the way to build up your own library. However you can import them to the OZW772 or OZW775.

Plant Diagrams exported by the ACS

The ACS V5.11 supports also the export of user defined plant diagrams. Within the Export function, the plant diagram format for the web server is also available.

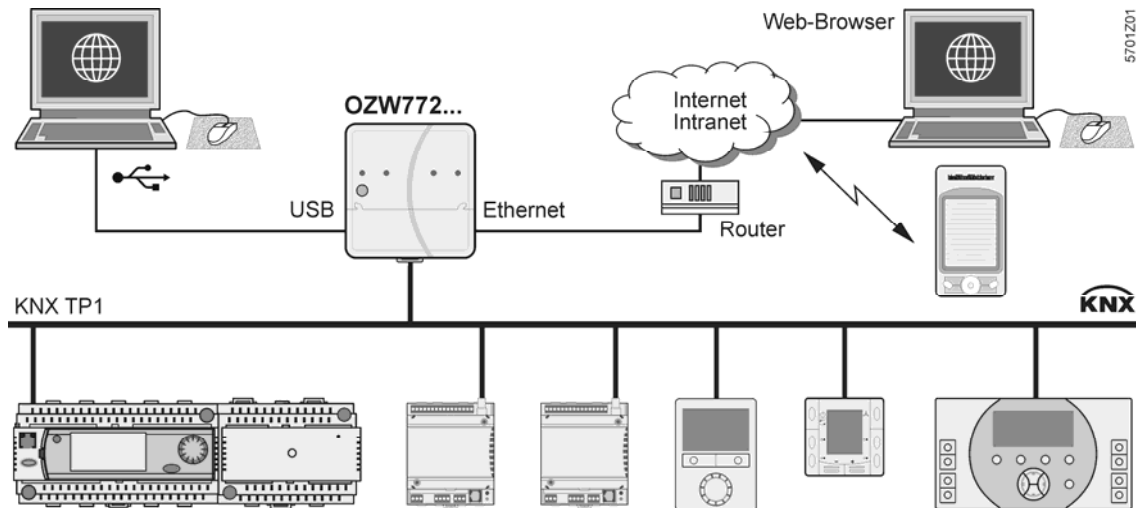
After the import into the OZW, some datapoints of the plant diagram has to be reworked.

Therefore we prefer the upper two sources.

2 System overview and product description

Operation

Connections for local operation (USB) and for remote operation via Ethernet:



Monitoring, Alarming

Faults are displayed in the web browser and, if configured, sent per e-mail via Ethernet.

Commissioning

The web server is commissioned locally via USB with a PC/laptop. A web browser or ACS software must be installed on the PC/laptop. The supplied USB cable connects the web server to the PC/laptop. Additional information is available in the installation instructions G5701 inserted in the package or the commissioning instructions C5701, available in STEP or also at: <http://<IP address>/doc/>

Valid Version Set

OZW772.xx		Version	Remarks
		V 2.03 or higher	current Version V2.03
With		Version	
QAW740	Series A	V 1.01	QAW740 with presence button
	Series B	V 2.00 or higher	QAW740 with mode selection button
RMB795		V 1.01 or higher (all)	
RMH760		V 1.01 or higher (all)	
RMH760B		V 2.00 or higher (all)	
RMK770		V 1.00 or higher (all)	
RMS705		V 1.00 or higher (all)	
RMU7x0		V 1.02 or higher (all)	
RMU7x0B		V 2.00 or higher (all)	
RMZ792		V 1.02 or higher	
RMA792		V 1.01 or higher (all)	
RXB21.1/FC-09		V 1.03 or higher (all)	
RXB22.1/FC-08		V 1.02 or higher (all)	
RXB21.1/FC-10		V 1.00 or higher (all)	
RXB21.1/FC-11		V 1.00 or higher (all)	
RXB22.1/FC-12		V 1.00 or higher (all)	
RXB24.1/CC-02		V 1.00 or higher (all)	
RXL21.1/FC-10		V 1.00 or higher (all)	
RXL21.1/FC-11		V 1.00 or higher (all)	
RXL22.1/FC-12		V 1.00 or higher (all)	
RXL24.1/CC-02		V 1.00 or higher (all)	
QAX910		V 1.00 or higher (all)	
ACS7xx		V 5.11 or higher	http://www.siemens.com/synco
OCI700		V 1.20 or higher	
OZW771.xx		V 1.00 or higher (all)	
ETS3		V 3.0 or higher	
Product data for ETS		V 1.0	http://www.siemens.com/synco

Commissioning and Remote Service with ACS Software

The new ACS V5.11 must be installed on the PC/laptop. The preferred connection to the OZW is locally via USB. Also an Ethernet connection is possible, but not a connection via OCI700.

KNX Device list

With the web browser, the device list must be created manually. The procedure is to enter the corresponding serial number for every device.

ACS can search all devices within the same KNX-Line automatically. Also after exchange of a KNX-device or KNX-address, ACS will refresh the device list automatically.

Therefore we recommend commissioning with ACS for bigger plants.

Displaying of user-defined Text in the ACS Software

All Synco™ 700 and 900 devices are available with different languages. Also ACS software supports several languages. What happens if the language of a device and the ACS software is different?

All languages are assigned to a specific Code Page (ASCII-Code)

	Code page	Implemented language	
		Synco™ 700 and web language	ACS
Croatian	1250	x	
Czech	1250	x	x
Hungarian	1250	x	x
Polish	1250	x	x
Romanian	1250	x	
Serbian	1250	x	
Slovak	1250	x	
Slovenian	1250	x	
Bulgaria	1251	x	
Russian	1251	x	x
Danish	1252	x	x
Dutch	1252	x	x
English	1252	x	x
Finnish	1252	x	x
French	1252	x	x
German	1252	x	x
Italian	1252	x	x
Norwegian	1252	x	
Portuguese	1252	x	
Spanish	1252	x	x
Swedish	1252	x	x
Greek	1253	x	
Turkey	1254	x	

User defined text is represented correct, if the language of the Synco™ device and the ACS applies the same code page.

E.g. it-it; de-fr; fr-nl; cs-sk

If ACS is operated with a language, which is assigned to another code page then the language of the controller, then the user defined text might be represented with mistakes.

E.g. hr-en (Croatian, Code Page 1250 - English, Code Page 1252)

Offline Trend with ACS

OZW772 supports with V2.0 the same Offline Trend feature as OZW775. For the time being the trend definition and the read out is done with ACS only. In a later OZW772 version it is planned to do it with the web browser.

Limitation of the Web Server Operation

- Plant diagram
 - Unlimited number of plant diagrams
 - max. 50 Datapoints per plant diagram
 - the time to display the whole diagram depends on:
 - Download time of background picture- and part picture (loaded from the Cache, if already available)
 - Number of datapoints (several 100 ms per datapoint)
 - Text and Link can be ignored
 - Normally there is enough memory on the web server available. Otherwise a warning message appears
- The device descriptions of the last 10 operated devices are kept in the memory. The response time for the first click on the 11th device takes about 4 sec and the oldest not operated device is removed from the memory. (First In, First Out)
- Any number of browsers can be used simultaneously. The maximum data throughput rate is distributed among the browsers. Operation slows down as the number of users increases accordingly.

3 Product documentation

Web server OZW772...

Document type	Document no.	Version
Data sheet	N5701	V2.0
Installation instructions (package insert)	G5701	V2.0
Commissioning instructions	C5701	V2.0

KNX-Bus

Data sheet	N3127
Basic documentation	P3127

ACS7... Software

Data sheet	N5640
------------	-------

Service tool OCI700.1

Data sheet	N5655
------------	-------

The following devices from the Synco product range can be connected to each OZW772... web server via KNX:

Synco 700

Devices		Data sheet no.
Universal controllers	RMU7x0, RMU7x0B	N3144, N3150
Heating controllers	RMH760, RMH760B	N3131, N3133
Boiler sequence controller	RMK770	N3132
Central control unit	RMB795	N3121
Switching and monitoring units	RMS705, RMS705B	N3123, N3124
Bus operator unit	RMZ792	N3113
Room unit	QAW740	N1633
Central communication units	OZW771, OZW775	N3117, N5663

Synco RXB/RXL

Room controller	RXB21.1, RXB22.1	N3873
Room controller	RXL21.1, RXL22.1	N3877
Room controller	RXB24.1	N3874
Room controller	RXL24.1	N3878

Synco RDG/RDF/RDU

Room thermostat for fan coils	RDG100KN	N3191
Room thermostat for VAV	RDG400KN	N3192
Room thermostat for fan coils	RDF301	N3171
Room thermostat for fan coils and lighting	RDF301.50	N3171
Room thermostat for VAV	RDU341	N3172

Synco living

Central apartment unit	QAX910	N2707
------------------------	--------	-------

4 Contact

If you have any questions relating to this fact, please do not hesitate to contact with:

George Voulvoutzis, phone +30 210 6864177, e-mail: george.voulvoutzis@siemens.com

For questions relating to technical topics, please get in touch with:

Antonios Mammalis, phone +30 210 6864961, e-mail: antonios.mamalis@siemens.com

Konstantinos Lontidis, phone +30 2310 479482, e-mail: konstantinos.lontidis@siemens.com

Kind regards

Siemens A.E.
Industry Sector
Building Technologies Division
Control Products & Systems

Artemidos 8
GR-151 25 Amaroussio/Athens

☎ 0030 210 6864177

@ george.voulvoutzis@siemens.com