



- Kv-value 0.63...39
- Size DN15 up to DN50
- Temperature area -5...+185°C

The valve range BTR is used with RVA5 actuators. The valve is intended for cold and hot water, glycol-mixed water or steam. The 3-way valve is intended to be used as a mixing valve.

Function

BTR (3-way valve):

Open between port 2 and port 1 when the stem is in its lowest position. (Is in this position closed between ports 3 and 1).

Open between port 3 and port 1 when the stem is in its top position. (Is in this position closed between ports 2 and 1).

See drawing on overleaf.

Actuators

The valves are intended to be used with RVA5 actuators (3-point or 0...10 V). *See product sheets for RVA5 for detailed information on suitable actuators.*

BTR can also be adjusted for use with other actuator brands (contact Regin for more information).

BTR

3-way control valves

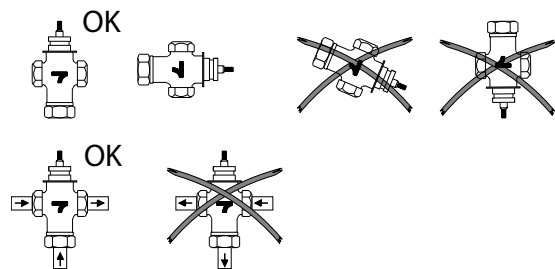
BTR is a range of 3-way control valves. They are used to control hot, cold or glycol-mixed water or steam in heating and ventilation systems.

- Pressure class PN16
- Differential pressure 0.7...1.6 MPa

Installation

The valve should be mounted according to the flow directions on the valve.

The 3-way valve is of mixing type and should be mounted in the mixing point.



Material

The valves have body and plug in gunmetal and stem in stainless steel. O-ring in Viton in the packing box.

Control of refrigerants

The valves can be used with different refrigerants. In this case, a special type of packing box should be mounted. Contact Regin for more information.

Models

3-way valves		Kv	Max. diff. pressure	Max. actuator force
BTR15-0,63	DN15	0.63	1.6 MPa	800 N
BTR15-1,0	DN15	1.0	1.6 MPa	800 N
BTR15-1,6	DN15	1.6	1.6 MPa	800 N
BTR15-2,1	DN15	2.1	1.6 MPa	800 N
BTR15-2,7	DN15	2.7	1.6 MPa	800 N
BTR20-4,2	DN20	4.2	1.6 MPa	1500 N
BTR20-5,6	DN20	5.6	1.6 MPa	1500 N
BTR25-10	DN25	10	1.6 MPa	1500 N
BTR32-16	DN32	16	1.6 MPa	1500 N
BTR40-27	DN40	27	1.3 MPa	1500 N
BTR50-39	DN50	39	0.7 MPa	1500 N

Technical data

Pressure class	PN16
Connection	Metric female threaded
Flow characteristics	Equal percentage
Rangeability	50:1
Stroke	20 mm
Media	Hot, cold or glycol-mixed water (max 50%) or steam
Max leakage	0.1 % of kv
Temperature area	-5...+185°C
Thread	The valves have female threaded connections according to ISO 228/1

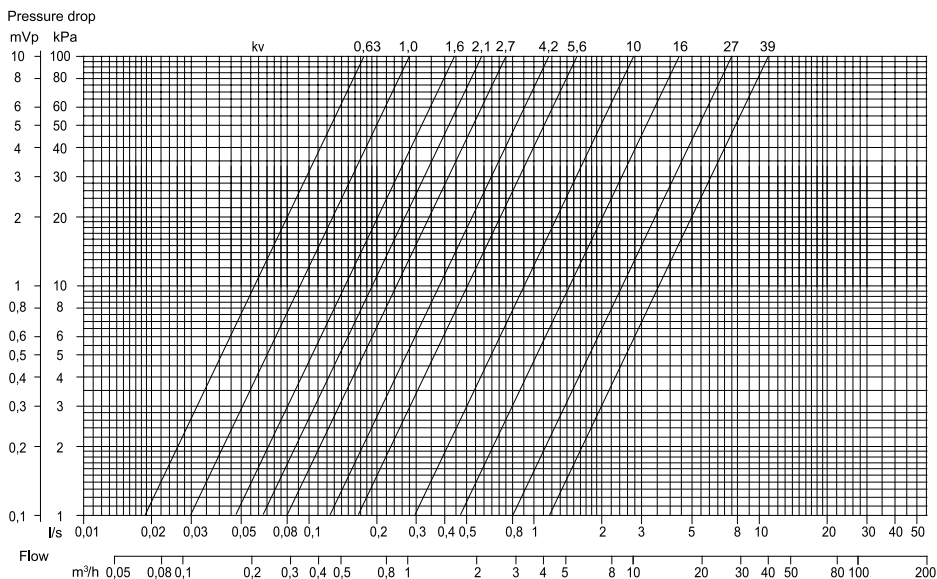
Material

Body	Rg5 (gun metal SS 5204)
Plug	Rg5 (gun metal SS 5204)
Stem	Stainless steel
Packing box	Self-adjusting Teflon (O-ring Viton)

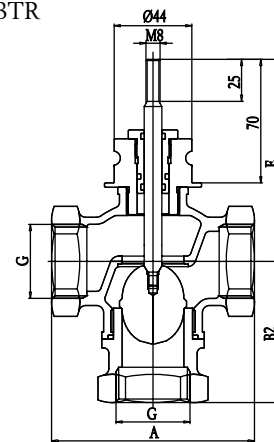
Dimensions and pressure drop diagram

Measurements in mm.

BTR	15-0,63	15-1,0	15-1,6	15-2,1	15-2,7	20-4,2	20-5,6	25-10	32-16	40-27	50-39
A	70	70	70	70	70	80	80	90	115	130	160
G	G1/2"	G1/2"	G1/2"	G1/2"	G1/2"	G3/4"	G3/4"	G1"	G1 1/4"	G1 1/2"	G2"
B1	56	56	56	56	56	56	56	56	60	64	70
B2	70	70	70	70	70	70	70	70	80	80	95
E	106	106	106	106	106	106	106	112	115	123	128



BTR



Head Office Sweden
 Phone: +46 31 720 02 00
 Web: www.regin.se
 Mail: info@regin.se

Sales Offices
 France: +33 14 171 46 46
 Hong Kong: +852 24 07 02 81
 Singapore: +65 67 47 82 33
 Germany: +49 30 77 99 40

REGIN

THE CHALLENGER IN BUILDING AUTOMATION